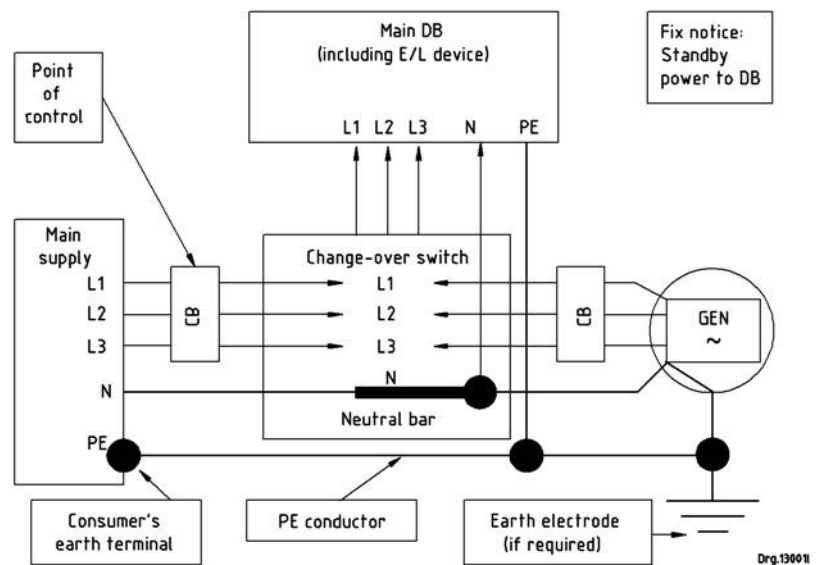


**Annex S**  
(informative)

Amdt 1; amdt 3; amdt 6

**Examples of emergency power installation configuration**

**S.1 Change-over switch connection where standby power feeds in at main supply**



**Key**

CB	circuit-breaker	E/L	earth leakage
DB	distribution board	GEN	generator

NOTE A three-pole change-over switch may be used where the supply is from a TN system of supply and the standby power is connected at the main supply.

**Figure S.1 — Change-over switch connection where standby power feeds in at main supply**

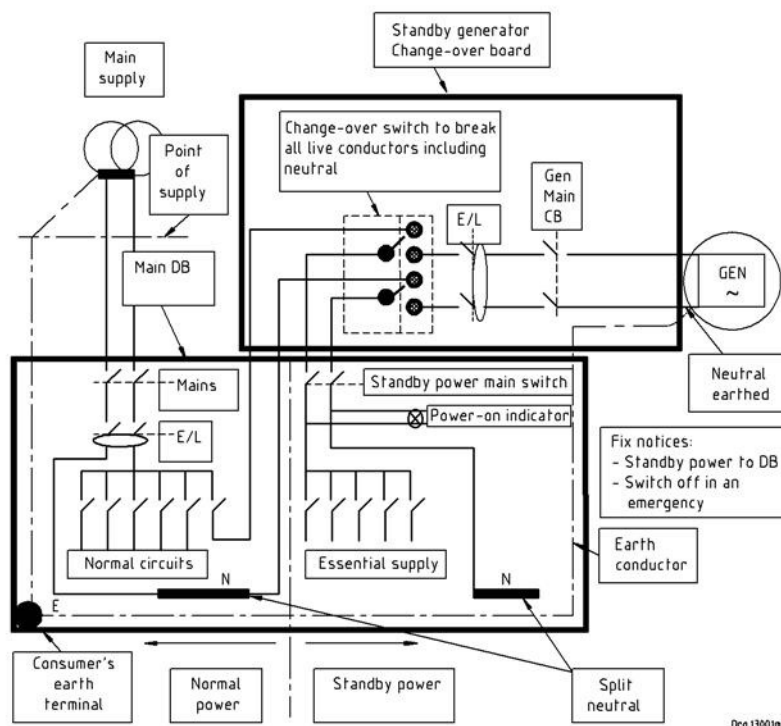
# SANS 10142-1:2008

Edition 1.6

(As amended Jan. 2003, Dec. 2003 and 2008)

## S.2 Change-over switch connection where a standby power generator feeds into a section of the main distribution board

Amdt 6



### Key

CB circuit-breaker  
DB distribution board  
E/L earth leakage  
GEN generator

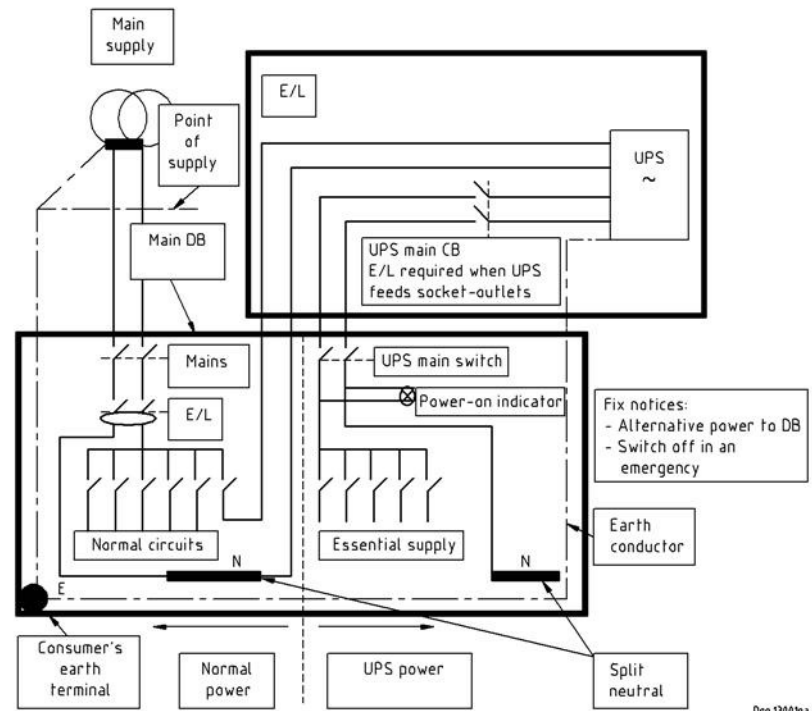
NOTE See the split neutral bars.

The main switch may be an E/L device.

Figure S.2 — Change-over switch connection where a standby power generator feeds into a section of the main distribution board

**S.3 Change-over switch connection where UPS power feeds into a section of the main distribution board**

Amdt 6



**Key**

CB circuit-breaker  
DB distribution board  
E/L earth leakage  
GEN generator

NOTE See the split neutral bars.

The main switch may be an E/L device.

**Figure S.3 — Change-over switch connection where UPS power feeds into a section of the main distribution board**

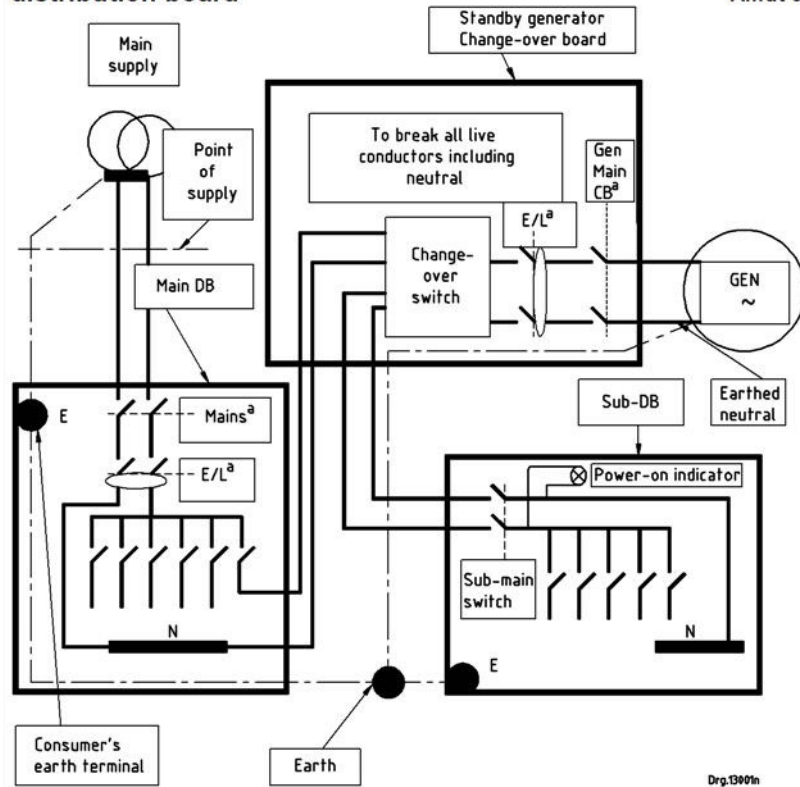
## SANS 10142-1:2008

Edition 1.6

(As amended Jan. 2003, Dec. 2003 and 2008)

### S.4 Change-over switch connection where standby power feeds in after the main distribution board (point of supply) into a sub-distribution board

Amdt 6



<sup>a</sup> The main circuit-breaker may be an earth-leakage device with isolation function.

**Figure S.4 — Change-over switch connection where standby power feeds in after the main distribution board (point of supply) into a sub-distribution board**